

**B-EDITION**

**Use as an alternative to the original**

# READING MYSTERY

## ONCE UPON A CRIME: STOLEN TIME



**By Mrs J's Resource Creations ©**

# Thank You for Downloading 😊

Thank you for your purchase. I sincerely hope both you and your students enjoy this product. Your feedback would be appreciated so that I can make my resources better. Please do not hesitate to contact me if you need me to make any adjustments to this resource for you.

**Let's stay connected:**

*Follow my store to stay updated on more FREEBIES and new products @ [Mrs J's Resource Creations](#)*

**Click the links below to find my:**

[Blog](#)

[Pinterest](#)

[Facebook](#)

## **Terms of Use**

- All pages of this packet are copyrighted. You may not create anything to sell or share based on this packet.
- This packet is for one teacher use only. Do not share with colleagues. If they like the packet please send them to my TPT store. TPT is about teachers supporting teachers 😊
- You are permitted to share the cover image of this packet on your blog or via social media as long as you link back to my store on TPT showcasing the product or link to the product. My store link is <http://www.teacherspayteachers.com/Store/Mrs-Js-Resource-Creations>

**Thank you so much for your download. I truly appreciate your business. 😊**

**[Mrs J's Resource Creations](#)**

This version is structured differently to the original copy found in this folder. I've aimed to create an alternate option in the hope that this may better suit the needs of some classes. If you choose this option, the self-checking feature is not included. Your students will need to check-in with you or somebody to gain access to each clue with this design. If you would like the self-checking option, please use the original copy found in your downloaded folder.

**Please note: The worksheets must be completed in the order I have put them in.**

## PREPARATION - B: EDITION

- Print, laminate, and cut the clue cards found on page 4.

I recommend either putting each clue in individual envelopes labeled, 'Clue 1, clue 2, etc'

OR putting each clue in a locked box (label boxes and keys with the clue number too).

Decide where you would like students to visit in your classroom to access each clue for set up.

- **Print and photocopy, pages 5 – 12 for your students.** Staple together into booklets or put into a case file folder.
- Page 6 is a 'Possible Suspects' list, which students will need to keep handy for eliminating characters as they discover clues throughout this reading mystery.

## HOW TO USE

You may wish to use the [optional video hook](#) found in your download to begin the activity first. Then continue to read page 5 to introduce the activity and state the case for your detectives.

Students will need to refer back to the suspect list (pg. 6) as they investigate. By the end, they should be able to narrow the suspect list down to just one character. The last character remaining (if done correctly) is the culprit!

Each activity page has a reading component, which is followed by either some questions, tasks or puzzles to solve. To make the word puzzles easier for your students, I have included an optional **WORD BANK** page in your folder download. **After students complete the clue page activity, they must check-in with you to show their work. If you are satisfied with their work, grant them access to the clue for that clue number page.**

**Page 12 is an optional way** to declare who the thief is, with an opportunity for some extra writing. Encourage your students to write their elimination reasoning with each clue. Tick the 'Well Done' box if the student declared the correct suspect and you are satisfied with the evidence (clues presented). Tick the 'Oops! Try Again!' box if they get the thief wrong or do not have the proper clues listed. You could skip this part and just have your students present their eliminated suspect list to check if they are correct.

**If your students are struggling with this activity, I recommend pausing frequently to discuss in groups or as a class.**

## ANSWERS

Answers and an elimination guide are provided on pages 13 – 18.

## AWARDS

On page 19 you will find some newspaper article awards. You can give these to students who solve the case correctly and provide enough evidence of course! Keep these hidden until solved.

**If you need help, have any questions, or notice an error in my work please email me on**

[JJResourceCreations@gmail.com](mailto:JJResourceCreations@gmail.com)

Thanks! ☺

# THE CLUES

Print, laminate, and cut.

Either:

- Keep the clues at your desk
- Place the clue cards in individual envelopes,
- Or lock in individual boxes.

As students show you a completed clue page, give them access to the clue.

**CLUE 1***Stolen Time*

**Medium sized  
fingerprints are on  
the screwdriver.**

**CLUE 2***Stolen Time*

**You find red  
thread on the  
button.**

**CLUE 3***Stolen Time*

**The thief is sly.**

**CLUE 4***Stolen Time*

**The thief has the  
power to fly.**

**CLUE 5***Stolen Time*

**The culprit wants  
to be young.**



# TALE TOWN'S DETECTIVE AGENCY HEADQUARTERS

Little Red enters your office . . .

Little Red



"Detective, I need your help! Last night someone broke into Tale Town's Tower Clock and stole both the short and long hands off the clock's face. I'm not sure if you knew this, but those hands have the power to mess with the time all over town. The thief already has started messing with the time, look at your watch Detective!



Looking down at your watch, you realize that Little Red is right! The time is saying 12:00, but you just ate breakfast!

Little Red

"It's so annoying! I missed two appointments this morning because of the time on my watch flicking back and forth like a yo-yo. If you look outside, you'll see that the town is starting to become frustrated and anxious too. Detective, could you please help solve who stole Tale Town's Clock Hands?



You grab your detective kit and agree to help solve this case.



"Thank you, Detective! I'll meet you at the bottom of Tale Town's Tower Clock in ten minutes. Probably don't look at your clock for the time.

On the following pages you will be visiting locations and discovering clues. As you complete each page, go over your possible suspects list to see if any information discovered eliminates a character from being the clock tower thief.

# POSSIBLE SUSPECTS

Suspect	Appearance	Character Traits	Has the ability to Fly? Yes/No	Clothing Colors	Motive
<b>Little Red</b>	<ul style="list-style-type: none"> <li>- Brown Hair</li> <li>- Blue Eyes</li> <li>- Short</li> <li>- Medium Sized</li> </ul>	<ul style="list-style-type: none"> <li>- Curious</li> <li>- Friendly</li> <li>- Anxious</li> <li>- Adventurous</li> </ul>	NO	<ul style="list-style-type: none"> <li>- Red</li> <li>- Blue</li> <li>- White</li> </ul>	Wants a second chance
<b>Zelda the Witch of the West</b>	<ul style="list-style-type: none"> <li>- Red Hair</li> <li>- Green Eyes</li> <li>- Tall</li> <li>- Medium Sized</li> </ul>	<ul style="list-style-type: none"> <li>- Lonely</li> <li>- Unfriendly</li> <li>- Sly</li> <li>- Cruel</li> </ul>	YES	<ul style="list-style-type: none"> <li>- Black</li> <li>- Green</li> <li>- Red</li> </ul>	Wants to cause chaos in Tale Town
<b>Nivens McTwisp the White Rabbit</b>	<ul style="list-style-type: none"> <li>- White Fur</li> <li>- Blue Eyes</li> <li>- Short</li> <li>- Small Sized</li> </ul>	<ul style="list-style-type: none"> <li>- Anxious</li> <li>- Energetic</li> <li>- Rude</li> <li>- Impatient</li> </ul>	NO	<ul style="list-style-type: none"> <li>- Orange</li> <li>- Red</li> <li>- Gray</li> </ul>	Never wants to be late again
<b>Bert the Big Bad Wolf</b>	<ul style="list-style-type: none"> <li>- Black fur</li> <li>- Brown Eyes</li> <li>- Tall</li> <li>- Large Sized</li> </ul>	<ul style="list-style-type: none"> <li>- Cruel</li> <li>- Sly</li> <li>- Strong</li> <li>- Energetic</li> </ul>	NO	<ul style="list-style-type: none"> <li>- Red</li> <li>- Green</li> <li>- Black</li> </ul>	Wants revenge
<b>Rumpelstiltskin</b>	<ul style="list-style-type: none"> <li>- Blonde Hair</li> <li>- Brown Eyes</li> <li>- Tall</li> <li>- Medium Sized</li> </ul>	<ul style="list-style-type: none"> <li>- Cheerful</li> <li>- Sly</li> <li>- Funny</li> <li>- Selfish</li> </ul>	NO	<ul style="list-style-type: none"> <li>- Brown</li> <li>- Red</li> <li>- Orange</li> </ul>	Wants revenge
<b>Pinocchio</b>	<ul style="list-style-type: none"> <li>- Black Hair</li> <li>- Blue Eyes</li> <li>- Short</li> <li>- Small Sized</li> </ul>	<ul style="list-style-type: none"> <li>- Friendly</li> <li>- Dishonest</li> <li>- Foolish</li> <li>- Selfish</li> </ul>	NO	<ul style="list-style-type: none"> <li>- Orange</li> <li>- Blue</li> <li>- Red</li> </ul>	Wants a second chance
<b>Granny Smith</b>	<ul style="list-style-type: none"> <li>- White hair</li> <li>- Blue Eyes</li> <li>- Short</li> <li>- Medium Sized</li> </ul>	<ul style="list-style-type: none"> <li>- Courageous</li> <li>- Generous</li> <li>- Calm</li> <li>- Caring</li> </ul>	NO	<ul style="list-style-type: none"> <li>- Green</li> <li>- Blue</li> <li>- White</li> </ul>	Wants to be young again
<b>Polly Piggles</b>	<ul style="list-style-type: none"> <li>- Blonde Hair</li> <li>- Brown Eyes</li> <li>- Short</li> <li>- Medium Sized</li> </ul>	<ul style="list-style-type: none"> <li>- Foolish</li> <li>- Caring</li> <li>- Greedy</li> <li>- Cheerful</li> </ul>	NO	<ul style="list-style-type: none"> <li>- Red</li> <li>- Blue</li> <li>- Black</li> </ul>	Wants revenge
<b>Peter Pan</b>	<ul style="list-style-type: none"> <li>- Red Hair</li> <li>- Brown Eyes</li> <li>- Tall</li> <li>- Medium Sized</li> </ul>	<ul style="list-style-type: none"> <li>- Adventurous</li> <li>- Foolish</li> <li>- Sly</li> <li>- Cheerful</li> </ul>	YES	<ul style="list-style-type: none"> <li>- Green</li> <li>- Red</li> <li>- Brown</li> </ul>	Wants to be young again
<b>The Mad Hatter</b>	<ul style="list-style-type: none"> <li>- Red Hair</li> <li>- Green Eyes</li> <li>- Short</li> <li>- Medium Sized</li> </ul>	<ul style="list-style-type: none"> <li>- Foolish</li> <li>- Friendly</li> <li>- Anxious</li> <li>- Generous</li> </ul>	NO	<ul style="list-style-type: none"> <li>- Green</li> <li>- Brown</li> <li>- Red</li> </ul>	Wants a second chance

**Solve the clues and then cross the suspects off the list until only one place remains! The last suspect remaining is the clock thief!**

# 1. VISIT LOCATION: Tale Town Clock Tower

Peering up at the tall tower, you notice that the two hands are missing from the giant clock face.

Little Red



"Detective, over here! Look, I locked the clock tower door last night at six O'clock p.m. Strangely it is still locked!"

Little Red waves for you to go inside the door at the bottom of the tower.

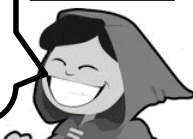


*You observe the following:*

- ☐ The entry door lock isn't broken
- ☐ There is no sign of a forced entry
- ☐ A screwdriver has been left on the floor next to a bottle of red fizzy drink..

"The thief must have stolen the key from my place to get inside so easily. No one else in town has a key to this clock tower!"

Little Red



**CLUE 1**

*Complete the comprehension questions below. After completing, check with your teacher to receive the clue!*

*Use the reading text above to answer the questions below. Highlight where you find the answers in the text above as evidence.*

1. What is missing from the giant clock face? \_\_\_\_\_
2. Who is the only person that owns the key to Tale Town's Clock Tower? \_\_\_\_\_
3. When did Little Red lock the clock tower door? \_\_\_\_\_
4. What do you notice about the door lock? \_\_\_\_\_
5. How does Little Red think the thief gained entry? \_\_\_\_\_  
\_\_\_\_\_
6. Where does Little Red keep the key? \_\_\_\_\_
7. What do you find on the floor? \_\_\_\_\_  
\_\_\_\_\_

*After completing your work, check with your teacher to discover CLUE 1.*

**CLUE 1**



## 2. VISIT LOCATION: Little Red's Cottage

Greeted by Little Red's grandma, you're pleased to be served some delicious lemonade and strange biscuits.



**Granny Smith**



"This time mess is making baking very difficult. Even when I set my timer on, it pauses and rewinds back and forth like crazy! So, please forgive me if the biscuits are not the best tasting today."

**Little Red**



"Granny, did you see anyone around our cottage yesterday? I think someone stole the clock tower key and then must've put it back before the morning!"

**Granny Smith**



"I heard some rustling around the garden late last night. It wasn't windy, so I went to take a look to see if that cheeky rabbit was back stealing my berries. All I found was a broken thorny branch fallen from my rose bush. A button was caught on one of the thorns."

**Little Red**



"OH! The button is probably off the thief's clothing! "

**CLUE 2:** Fill in the missing letters to complete the CAUSE and EFFECT statements below. Then match the letters with the numbers into the empty boxes to reveal a clue!  
Use the reading text above to answer the questions below. Highlight where you find the answers in the text above as evidence.

**CAUSE:** Granny's timer keeps flicking back and forth.  
**EFFECT:** \_\_\_\_\_

**CAUSE:** Granny heard some rustling around the garden late last night.  
**EFFECT:** \_\_\_\_\_

**CAUSE:** The thief escaped before Granny got to the garden.  
**EFFECT:** \_\_\_\_\_

**CAUSE:** The thief's clothing got caught on a thorny rose bush branch.  
**EFFECT:** \_\_\_\_\_

After completing your work, check with your teacher to discover CLUE 2.

### CLUE 2





# 3. VISIT LOCATION: Down Muffin Lane

You and Little Red are walking down Muffin Lane. You notice a crowd of angry citizens.

**Nivens McTwisp**



"It's all your fault! You are the one with the key to the tower; and the only one with access! I've been late for three very important dates! "

**Little Red**



"No! It wasn't me! Someone stole my clock tower key and returned it!"

**Polly Piggles**



"Why would someone steal your key and then go to the effort of returning it?"

"The thief must be trying to make it look like it was me!"

**Sheriff Star**



"Little Red, you are under arrest for the theft of Tale Town's Clock Tower Hands and for messing with the time. You will remain behind bars until you confess to the crime or proven innocent!"

As Sheriff Star gives the order, Little Red is handcuffed and taken to a cell in Tale Town's dungeon. Little Red looks at you helplessly as she pleads her innocence.

**CLUE 3: Complete the comprehension questions below. After completing, check with your teacher to receive the clue!**

*Use the reading text above to answer the questions below. Highlight where you find the answers in the text above as evidence.*

- 1. Why is Nivens McTwisp angry with Little Red? \_\_\_\_\_
- 2. Why doesn't Polly Piggles believe Little Red? \_\_\_\_\_
- 3. What does Little Red think the thief is doing? \_\_\_\_\_
- 4. How long will Little Red remain behind bars? \_\_\_\_\_

**After completing your work, check with your teacher to discover CLUE 3.**

**CLUE 3**



# 4. VISIT LOCATION: Detective Headquarters

You return to your office to think about what could have happened. You still don't have enough evidence to solve this case.

Strangely, a note has been left right next to your computer. You stop to read it to see if you can find any evidence in the text:

Dear Detective,

I went for a walk late last night. It was 11:00 p.m., when I walked past Tale Town's Clock Tower. I noticed someone taking off the clock hands, so I hid behind a nearby tree to watch what was going on. Unfortunately, it was too dark for me to identify the thief. They disappeared for a moment, but then I saw the thief opening the bottom door and throwing something small inside; it looked like a tool. Afterwards, the thief continued to walk over to Little Red's house. Unfortunately, I didn't get a chance to see anything else. Out of fear for being out past midnight, I ran back home.

From,  
Cinderella

**CLUE 4:** Complete the comprehension questions below. After completing, check with your teacher to receive the clue!

*Use the reading text above to answer the questions below. Highlight where you find the answers in the text above as evidence.*

- 1. **WHO** wrote the letter? \_\_\_\_\_
- 2. **WHEN** did Cinderella see the thief removing the clock hands? \_\_\_\_\_
- 3. **WHERE** did Cinderella hide? \_\_\_\_\_
- 4. **WHAT** did the thief throw inside the door? \_\_\_\_\_
- 5. **WHERE** did the thief go after leaving the clock tower? \_\_\_\_\_
- 6. **WHY** was the thief unable to be identified? \_\_\_\_\_
- 7. **WHY** did Cinderella run back home? \_\_\_\_\_

After completing your work, check with your teacher to discover CLUE 4.

**CLUE 4**



# 5. VISIT LOCATION: The Three Little Pigs Café

You head over to The Three Little Pigs Café to buy some food.

Little Miss Muffet



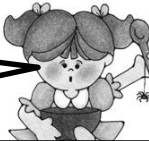
"With time all over the place I feel like as if I am going crazy! No wonder why there is so much chaos in town. I don't understand why anyone would bother to play with time like this, all it does is drive everyone crazy."

Georgie Porgie



"It's so strange! I looked so much older an hour ago, now I look years younger. This is all so confusing!"

Little Miss Muffet



"I don't even know if it's breakfast, lunch or supper. I guess I'll be eating curds and whey all day!"

"Looks like the time issue isn't bothering your spider friend! Anyway, I don't care what time of the day it is, I'm going to eat plum pie all the time now!"

**CLUE 5** - Below is a set of clue riddles or definitions to words written in the reading section above. The words belonging to each definition are somewhere in the reading passage above. Check with your teacher for the clue after completion.  
→ *highlight the word answers in the text above as evidence.*

A baked dish of fruit, or meat/vegetables, with a top and base of pastry.	_____
Unusual or surprising; difficult to understand or explain.	_____
A type of stone fruit.	_____
A meal eaten in the morning.	_____
A creature with eight legs.	_____
Something that Miss Muffet is eating.	_____
It has sixty minutes.	_____
A built up area with a name.	_____
Something that Miss Muffet is doing at the café.	_____

After completing your work, check with your teacher to discover CLUE 5.

**CLUE 5**



# SOLVE THE MYSTERY!

## ONCE UPON A CRIME: STOLEN TIME

WHO stole the magical clock hands and is messing with the time?

\_\_\_\_\_

In the space below, write a list of the clues that you discovered during your investigation. Include a brief outline explaining how each clue helped you decide which suspects to eliminate from your list.

☐

\_\_\_\_\_

\_\_\_\_\_

☐

\_\_\_\_\_

\_\_\_\_\_

☐

\_\_\_\_\_

\_\_\_\_\_

☐

\_\_\_\_\_

\_\_\_\_\_

☐

\_\_\_\_\_

\_\_\_\_\_

☐

**Well done!**

Upon your brilliant discovery, Tale Town's Clock Tower Hands are immediately returned and the time is restored once again. Everyone in Tale Town cheers for your hard work on this case, great job Detective!

☐

**Oops! Try again!**

No, that is not who stole the clock hands, go back, check your work and try again.

# 1. ANSWER KEY

Peering up at the tall tower, you notice that the two hands are missing from the giant clock face.

Little Red



"Detective, over here! Look, I locked the clock tower door last night at six O'clock p.m. Strangely it is still locked!"

Little Red waves for you to go inside the door at the bottom of the tower.

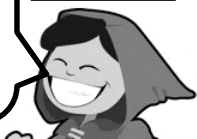


*You observe the following:*

- ☐ The entry door lock isn't broken
- ☐ There is no sign of a forced entry
- ☐ A screwdriver has been left on the floor next to a bottle of red fizzy drink..

"The thief must have stolen the key from my place to get inside so easily. No one else in town has a key to this clock tower!"

Little Red



**CLUE 1**

*Complete the comprehension questions below. After completing, check with your teacher to receive the clue!*

*Use the reading text above to answer the questions below. Highlight where you find the answers in the text above as evidence.*

1. What is missing from the giant clock face? The two hands.
2. Who is the only person that owns the key to Tale Town's Clock Tower? Little Red
3. When did Little Red lock the clock tower door? Last night at six O'clock p.m.
4. What do you notice about the door lock? The door lock isn't broken.
5. How does Little Red think the thief gained entry? The thief must have stolen the key to get inside so easily.
6. Where does Little Red keep the key? At her place.
7. What do you find on the floor? A screwdriver and a bottle of red fizzy drink.

*After completing your work, check with your teacher to discover CLUE 1.*

**CLUE 1**



Medium sized fingerprints are on the screwdriver.



## 2. ANSWER KEY

Greeted by Little Red's grandma, you're pleased to be served some delicious lemonade and strange biscuits.



**Granny Smith**



"This time mess is making baking very difficult. Even when I set my timer on, it pauses and rewinds back and forth like crazy! So, please forgive me if the biscuits are not the best tasting today."

**Little Red**



"Granny, did you see anyone around our cottage yesterday? I think someone stole the clock tower key and then must've put it back before the morning!"

**Granny Smith**



"I heard some rustling around the garden late last night. It wasn't windy, so I went to take a look to see if that cheeky rabbit was back stealing my berries. All I found was a broken thorny branch fallen from my rose bush. A button was caught on one of the thorns."

**Little Red**



"OH! The button is probably off the thief's clothing! "

**CLUE 2:** Fill in the missing letters to complete the CAUSE and EFFECT statements below. Then match the letters with the numbers into the empty boxes to reveal a clue!  
Use the reading text above to answer the questions below. Highlight where you find the answers in the text above as evidence.

**CAUSE:** Granny's timer keeps flicking back and forth.

**EFFECT:** So, Granny is finding it difficult to bake.

**CAUSE:** Granny heard some rustling around the garden late last night.

**EFFECT:** She went to check if that cheeky rabbit was back stealing berries.

**CAUSE:** The thief escaped before Granny got to the garden.

**EFFECT:** All Granny found was a broken thorny branch with a button.

**CAUSE:** The thief's clothing got caught on a thorny rose bush branch.

**EFFECT:** All A button was left behind on one of the thorns.

After completing your work, check with your teacher to discover CLUE 2.

### CLUE 2



You find red thread on the button.

3. ANSWER KEY

You and Little Red are walking down Muffin Lane. You notice a crowd of angry citizens.

Nivens McTwisp



"It's all your fault! You are the one with the key to the tower; and the only one with access! I've been late for three very important dates! "

Little Red



"No! It wasn't me! Someone stole my clock tower key and returned it!"

Polly Piggles



"Why would someone steal your key and then go to the effort of returning it?"

"The thief must be trying to make it look like it was me!"

Sheriff Star



"Little Red, you are under arrest for the theft of Tale Town's Clock Tower Hands and for messing with the time. You will remain behind bars until you confess to the crime or proven innocent!"

As Sheriff Star gives the order, Little Red is handcuffed and taken to a cell in Tale Town's dungeon. Little Red looks at you helplessly as she pleads her innocence.

CLUE 3: Complete the comprehension questions below. After completing, check with your teacher to receive the clue!

Use the reading text above to answer the questions below. Highlight where you find the answers in the text above as evidence.

- 1. Why is Nivens McTwisp angry with Little Red? Because he blames Little Red for being late to three very important dates.
- 2. Why doesn't Polly Piggles believe Little Red? Because Polly doesn't understand why the thief would go to the effort of returning the key.
- 3. What does Little Red think the thief is doing? The thief is trying to make it look like it was her who stole the clock tower hands.
- 4. How long will Little Red remain behind bars? Until she confesses to the crime or is proven innocent.

After completing your work, check with your teacher to discover CLUE 3.

CLUE 3



THE THIEF IS SLY

4. ANSWER KEY

You return to your office to think about what could have happened. You still don't have enough evidence to solve this case.

Strangely, a note has been left right next to your computer. You stop to read it to see if you can find any evidence in the text:

Dear Detective,

I went for a walk late last night. It was 11:00 p.m., when I walked past Tale Town's Clock Tower. I noticed someone taking off the clock hands, so I hid behind a nearby tree to watch what was going on. Unfortunately, it was too dark for me to identify the thief. They disappeared for a moment, but then I saw the thief opening the bottom door and throwing something small inside; it looked like a tool. Afterwards, the thief continued to walk over to Little Red's house. Unfortunately, I didn't get a chance to see anything else. Out of fear for being out past midnight, I ran back home.

From,  
Cinderella

CLUE 4: Complete the comprehension questions below. After completing, check with your teacher to receive the clue!

Use the reading text above to answer the questions below. Highlight where you find the answers in the text above as evidence.

- 1. WHO wrote the letter? Cinderella
- 2. WHEN did Cinderella see the thief removing the clock hands? Late last night at eleven O'clock p.m.
- 3. WHERE did Cinderella hide? She hid behind a nearby tree.
- 4. WHAT did the thief throw inside the door? Something small that looked like a tool.
- 5. WHERE did the thief go after leaving the clock tower? To Little Red's House.
- 6. WHY was the thief unable to be identified? Because it was too dark.
- 7. WHY did Cinderella run back home? Out of fear for being out past midnight.

After completing your work, check with your teacher to discover CLUE 4.

CLUE 4



THE THIEF HAS THE POWER TO FLY.

5. ANSWER KEY

You head over to The Three Little Pigs Café to buy some food.

Little Miss Muffet



"With time all over the place I feel like as if I am going crazy! No wonder why there is so much chaos in town. I don't understand why anyone would bother to play with time like this, all it does is drive everyone crazy."

Georgie Porgie



"It's so strange! I looked so much older an hour ago, now I look years younger. This is all so confusing!"

Little Miss Muffet



"I don't even know if it's breakfast, lunch or supper. I guess I'll be eating curds and whey all day!"

"Looks like the time issue isn't bothering your spider friend! Anyway, I don't care what time of the day it is, I'm going to eat plum pie all the time now!"

**CLUE 5** - Below is a set of clue riddles or definitions to words written in the reading section above. The words belonging to each definition are somewhere in the reading passage above. Check with your teacher for the clue after completion.  
→ *highlight the word answers in the text above as evidence.*

A baked dish of fruit, or meat/vegetables, with a top and base of pastry.	PIE
Unusual or surprising; difficult to understand or explain.	Strange
A type of stone fruit.	Plum
A meal eaten in the morning.	Breakfast
A creature with eight legs.	Spider
Something that Miss Muffet is eating.	Curds and Whey
It has sixty minutes.	Hour
A built up area with a name.	Town
Something that Miss Muffet is doing at the café.	Eating

After completing your work, check with your teacher to discover CLUE 5.

CLUE 5



# ELIMINATION OF SUSPECTS

Suspect	Appearance	Character Traits	Has the ability to Fly? Yes/No	Clothing Colors	Motive
Little Red	<ul style="list-style-type: none"> <li>- Brown Hair</li> <li>- Blue Eyes</li> <li>- Short</li> <li>- Medium Sized</li> </ul>	<ul style="list-style-type: none"> <li>- Curious</li> <li>- Friendly</li> <li>- Anxious</li> <li>- Adventurous</li> </ul>	NO	<ul style="list-style-type: none"> <li>- Red</li> <li>- Blue</li> <li>- White</li> </ul>	Wants a second chance
Zelda the Witch of the West	<ul style="list-style-type: none"> <li>- Red Hair</li> <li>- Green Eyes</li> <li>- Tall</li> <li>- Medium Sized</li> </ul>	<ul style="list-style-type: none"> <li>- Lonely</li> <li>- Unfriendly</li> <li>- Sly</li> <li>- Cruel</li> </ul>	YES	<ul style="list-style-type: none"> <li>- Black</li> <li>- Green</li> <li>- Red</li> </ul>	Wants to cause chaos in Tale Town
Nivens McTwisp the White Rabbit	<ul style="list-style-type: none"> <li>- White Fur</li> <li>- Blue Eyes</li> <li>- Short</li> <li>- Small Sized</li> </ul>	<ul style="list-style-type: none"> <li>- Anxious</li> <li>- Energetic</li> <li>- Rude</li> <li>- Impatient</li> </ul>	NO	<ul style="list-style-type: none"> <li>- Orange</li> <li>- Red</li> <li>- Gray</li> </ul>	Never wants to be late again
Bert the Big Bad Wolf	<ul style="list-style-type: none"> <li>- Black fur</li> <li>- Brown Eyes</li> <li>- Tall</li> <li>- Large Sized</li> </ul>	<ul style="list-style-type: none"> <li>- Cruel</li> <li>- Sly</li> <li>- Strong</li> <li>- Energetic</li> </ul>	NO	<ul style="list-style-type: none"> <li>- Red</li> <li>- Green</li> <li>- Black</li> </ul>	Wants revenge
Rumpelstiltskin	<ul style="list-style-type: none"> <li>- Blonde Hair</li> <li>- Brown Eyes</li> <li>- Tall</li> <li>- Medium Sized</li> </ul>	<ul style="list-style-type: none"> <li>- Cheerful</li> <li>- Sly</li> <li>- Funny</li> <li>- Selfish</li> </ul>	NO	<ul style="list-style-type: none"> <li>- Brown</li> <li>- Red</li> <li>- Orange</li> </ul>	Wants revenge
Pinocchio	<ul style="list-style-type: none"> <li>- Black Hair</li> <li>- Blue Eyes</li> <li>- Short</li> <li>- Small Sized</li> </ul>	<ul style="list-style-type: none"> <li>- Friendly</li> <li>- Dishonest</li> <li>- Foolish</li> <li>- Selfish</li> </ul>	NO	<ul style="list-style-type: none"> <li>- Orange</li> <li>- Blue</li> <li>- Red</li> </ul>	Wants a second chance
Granny Smith	<ul style="list-style-type: none"> <li>- White hair</li> <li>- Blue Eyes</li> <li>- Short</li> <li>- Medium Sized</li> </ul>	<ul style="list-style-type: none"> <li>- Courageous</li> <li>- Generous</li> <li>- Calm</li> <li>- Caring</li> </ul>	NO	<ul style="list-style-type: none"> <li>- Green</li> <li>- Blue</li> <li>- White</li> </ul>	Wants to be young again
Polly Piggles	<ul style="list-style-type: none"> <li>- Blonde Hair</li> <li>- Brown Eyes</li> <li>- Short</li> <li>- Medium Sized</li> </ul>	<ul style="list-style-type: none"> <li>- Foolish</li> <li>- Caring</li> <li>- Greedy</li> <li>- Cheerful</li> </ul>	NO	<ul style="list-style-type: none"> <li>- Red</li> <li>- Blue</li> <li>- Black</li> </ul>	Wants revenge
Peter Pan ANSWER	<ul style="list-style-type: none"> <li>- Red Hair</li> <li>- Brown Eyes</li> <li>- Tall</li> <li>- Medium Sized</li> </ul>	<ul style="list-style-type: none"> <li>- Adventurous</li> <li>- Foolish</li> <li>- Sly</li> <li>- Cheerful</li> </ul>	YES	<ul style="list-style-type: none"> <li>- Green</li> <li>- Red</li> <li>- Brown</li> </ul>	Wants to be young again
The Mad Hatter	<ul style="list-style-type: none"> <li>- Red Hair</li> <li>- Green Eyes</li> <li>- Short</li> <li>- Medium Sized</li> </ul>	<ul style="list-style-type: none"> <li>- Foolish</li> <li>- Friendly</li> <li>- Anxious</li> <li>- Generous</li> </ul>	NO	<ul style="list-style-type: none"> <li>- Green</li> <li>- Brown</li> <li>- Red</li> </ul>	Wants a second chance



# Tale Town's Clock Tower Fixed!

Date: \_\_\_\_\_

**Thanks to the amazing  
detective work of**

\_\_\_\_\_

**Time has been fixed and all  
back to normal again.**



*It's about time that this time mess was fixed, and thanks to Detective \_\_\_\_\_, the thief, Peter Pan, has been arrested and Tale Town's Clock Tower is fixed.*

Peter Pan pleaded as Sheriff Humbert took him to the police station, "I just didn't want to grow old! I wanted to be young again. I meant no harm to anyone else, I'm sorry!"

No matter the reason, Peter Pan must make up for the crime that he has committed. The chaos and panic in town made many upset, and theft is a serious felony! Sheriff Humbert stated, "I'll be keeping Peter behind bars until I decide on a way he can make it up to the folk of Tale Town."

Thankfully, with the return of the magical clock hands, the time has settled back to how it should be. Everyone is calm and happy again.

A big THANK YOU to the wonderful work of Detective \_\_\_\_\_.

# Tale Town's Clock Tower Fixed!

Date: \_\_\_\_\_

**Thanks to the amazing  
detective work of**

\_\_\_\_\_

**Time has been fixed and all  
back to normal again.**



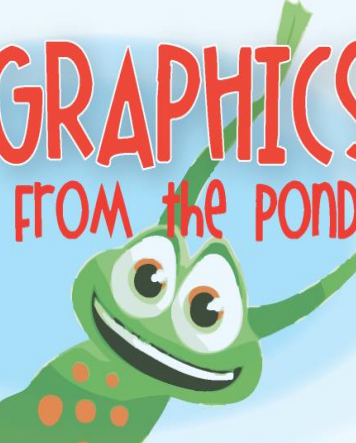
*It's about time that this time mess was fixed, and thanks to Detective \_\_\_\_\_, the thief, Peter Pan, has been arrested and Tale Town's Clock Tower is fixed.*

Peter Pan pleaded as Sheriff Humbert took him to the police station, "I just didn't want to grow old! I wanted to be young again. I meant no harm to anyone else, I'm sorry!"

No matter the reason, Peter Pan must make up for the crime that he has committed. The chaos and panic in town made many upset, and theft is a serious felony! Sheriff Humbert stated, "I'll be keeping Peter behind bars until I decide on a way he can make it up to the folk of Tale Town."

Thankfully, with the return of the magical clock hands, the time has settled back to how it should be. Everyone is calm and happy again.

A big THANK YOU to the wonderful work of Detective \_\_\_\_\_.



# GRAPHICS FROM the POND

<http://frompond.blogspot.com>



# CLOUDY ARTS





WHIMSY CLIPS

PREMIUM CLIP ART

- \* 300DPI
- \* COLOR & B/W

STARTING AT \$3

The logo for Zip-A-Dee Doo-DAH Designs features the text "ZIP-A-DEE DOO-DAH" in a large, bold, bubbly font. "ZIP-A-DEE" is in yellow with a white outline, and "DOO-DAH" is in orange with a white outline. Below this, the word "Designs" is written in a smaller, black, cursive script. The background of the logo is a blue and white sunburst pattern.The book cover for 'Creative Clips' by Krista Wallden features a black background. At the top and bottom are horizontal borders of colorful, hand-drawn rectangular blocks in shades of blue, green, purple, yellow, and red. The title 'Creative Clips' is written in a large, white, bubbly, hand-drawn font. Below the title, the author's name 'by Krista Wallden' is written in a smaller, white, cursive font. On the right side of the cover is a large, brown, hand-drawn paint palette with several colorful paint blobs in purple, orange, blue, yellow, red, and green.